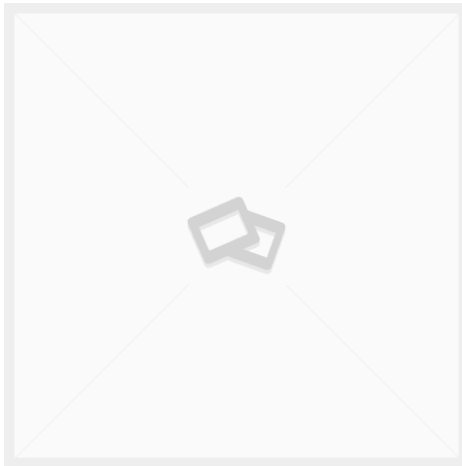




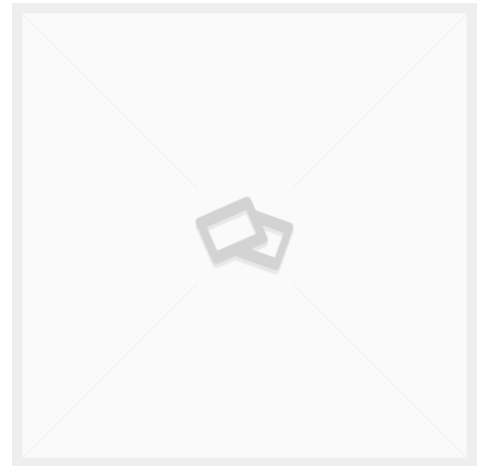
**WINDOW CHANNEL WITH ALU-RIM
(RUBBER) 70CM**

SKU: A-10



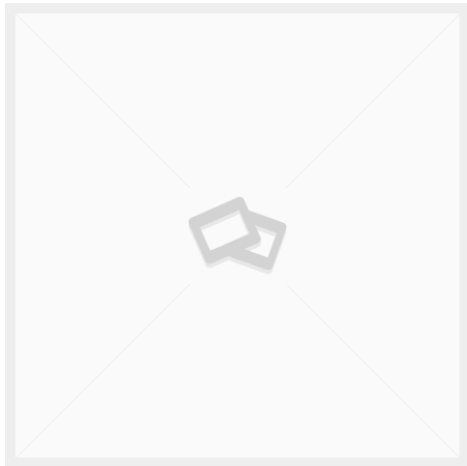
**WINDSCREEN FACELLIA/FACEL
III/FACEL 6 CLEAR**

SKU: A-3



**WINDSCREEN FACELLIA/FACEL
III/FACEL 6 TINTED**

SKU: A-3A



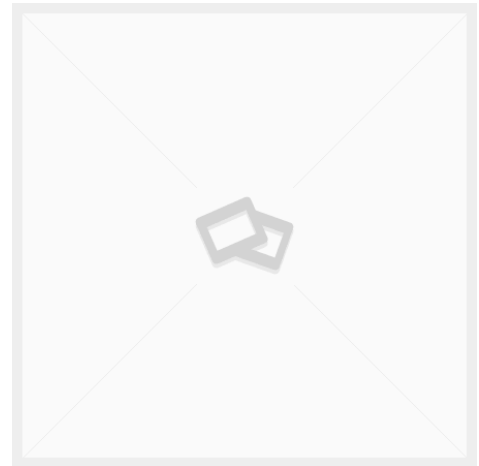
**SET (2) DOOR QUARTER GLASS
FACELLIA/FACEL III/FACEL 6
CLEAR**

SKU: A-5E



**EXHAUSTSYSTEM F III IN ST.
STEEL**

SKU: B-3B



**KIT TO FIT THE FACEL III EXHAUST
SYSTEM**

SKU: B-4E



**RUBBER FOR FITTING THE
SYSTEM ON THE CHASSIS (BIG)**

SKU: B-5A



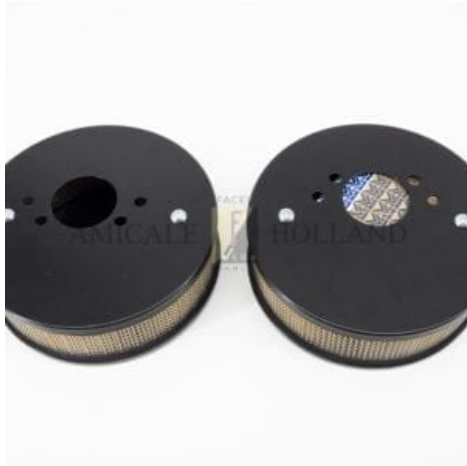
**MASS STRIP (8 CYL) EXHAUST-
CHASSIS**

SKU: B-5B



**GASKET (MANIFOLD-
EXHAUSTPIPE) FACEL III**

SKU: B-7



**SET (2)AIR FILTER HOUSINGS
FACEL III**
SKU: C-11D



OIL FILTER FACEL III
SKU: C-12C



**SET (2) ENGINE MOUNTINGS
FACEL III**
SKU: C-13C



**FUEL FILTER 8 CYL., ALTERNATIVE
(PLASTIC)**
SKU: C-17



FUEL FILTER 8 CYL., (METAL)
SKU: C-17A



**RUBBER FUEL HOSE TO FUEL
TANK (FACELLIA F2/F III/ F 6)**
SKU: C-18B



OILPUMP FACEL III
SKU: C-2B



OIL PRESSURE HOSE FACEL III
SKU: C-3C



**OIL PRESSURE HOSE FACELLIA/
FACEL 3**
SKU: C-3E



**FUEL PUMP, ELECTRICAL/
ALTERNATIVE (8 CYL) WITH
ADAPTERS**

SKU: C-4B



**FUEL PUMP MECHANICAL FACEL
III**

SKU: C-4D



**INLET MANIFOLD GASKET SET
PAM**

SKU: C-5F-3



**ENGINE GASKET SET FACEL III
(B18B)**

SKU: C-5I



**CYLINDERHEAD GASKET FACEL III
(B18B)**

SKU: C-5II



**ACCELERATOR-PEDAL CABLE
FACEL III**

SKU: C-6FF



**INTERIOR LIGHT LENS ALL
MODELS WHITE**

SKU: D-10



STAINLESS BEZEL AROUND D-10

SKU: D-10A



**INTERIOR LIGHT LENS ALL
MODELLS BLUE**

SKU: D-10B



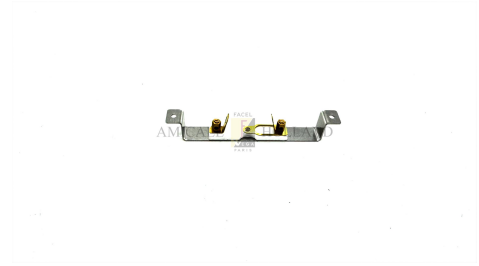
LAMP HOLDER FITTING FOR D-10

SKU: D-10C



UNDER BONNET/ BOOTLID LIGHT LENS (CLEAR)

SKU: D-11



LAMP HOLDER FITTING FOR D-11

SKU: D-11B



DUPLO BULB FOR D-1A AND MEGALUX, WHITE

SKU: D-13



DUPLO BULB FOR D-1A, YELLOW

SKU: D-13A



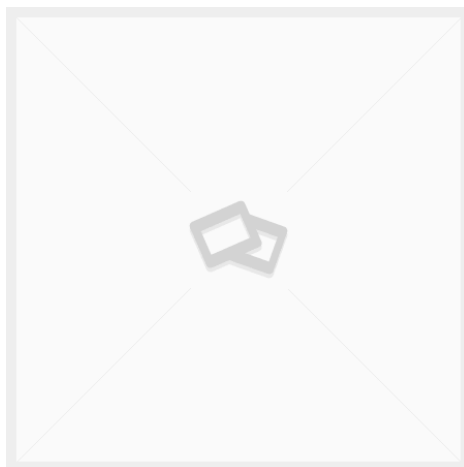
INTERIOR LIGHT LENS FACEL II/ III/ 6/ EXC, ROUND, CLEAR

SKU: D-16



INTERIOR LIGHT ABOVE MIRROR FACEL 2/3

SKU: D-17



HEADLAMP-GLASS (MEGALUX) CONVEX FACELLIA/FACEL II/ III/6

SKU: D-1B



HEADLAMP-GLASS (MEGALUX) FLAT TYPE

SKU: D-1B1



**SET (4) REFLECTORS FOR
MEGALUX HEADLAMPS**

SKU: D-1B4



REFLECTOR HOLDER MEGALUX

SKU: D-1B5



**BULB HOLDER FOR TURN/
PARKING LIGHT ON D-1B5**

SKU: D-1B6



**O-RING FOR FITTING D-1B4 ON
D-1B5**

SKU: D-1B7



**DEVICE TO CLICK-IN MEGALUX
HEADLAMPS**

SKU: D-1K



**ADJUST SCREW MARCHAL/
MEGALUX HEADLAMPS**

SKU: D-1K1



**RIM- BEZEL- CHROME REAR LIGHT
FACEL 2/3/6**

SKU: D-25



**RIM (BEZEL) INNER, CHROME,
FOR REFLECTOR IN REAR LIGHT
FACEL II /III /6**

SKU: D-25A



**LENS REVERSE LIGHT FACEL II/
FACEL III/ FACEL 6 NOS**

SKU: D-26-1



**COMPLETE REVERSE LIGHT FACEL
II/ III/ 6 NOS**

SKU: D-26AA



**SET (2) NUMBERPLATE LIGHTS
(FACEL II/ III/ 6) ALTERNATIVE**

SKU: D-28A



**RUBBER INSIDE NUMBERPLATE
LIGHTS (FACEL II/ III/ 6)**

SKU: D-28B



**LENS FRONT PARKING LIGHT/
TURN SIGNAL FACEL II/ III USA**

SKU: D-31



**CONNECTOR HEADLAMP-WIRING
(ALTERNATIVE) MARCHAL/
MEGALUX**

SKU: D-32



**REAR LIGHT LENS FACEL II/III/6
(ROUND)**

SKU: D-5



**SET (4) SHOCK ABSORBERS ,
FACELLIA / FACEL III /6**

SKU: E-1



**OUTER WHEELBEARING FACELLIA/
FACEL III**

SKU: E-10A1



**PINION OIL SEAL REAR AXLE
(FACELLIA/FACEL III)**

SKU: E-10B1



**SET (2) INNER OIL SEALS
HALFSAFT REAR AXLE
FACELLIA/FACEL III**

SKU: E-10E1



OUTER OIL SEAL HALFSAFT CYL

SKU: E-10F1



**SET INNER WHEEL BEARINGS 4
CILINDER**

SKU: E-10FC



**NUT FOR HALF SCHAFT 4
CILINDER**

SKU: E-10H2



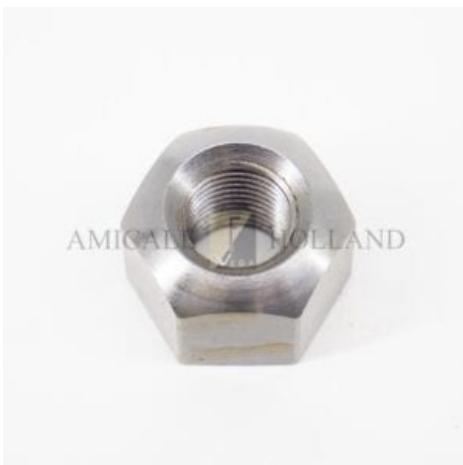
PINION BEARING SET 4 CYL

SKU: E-10J1



**GREASE NIPPLE REAR AXLE SET
[2]**

SKU: E-10PP



**WHEEL NUT 4 CIL. EN 8 CIL. WITH
DRUM BRAKES**

SKU: E-10Q



**SET (2) FRONT HUB BEARINGS (4
CYL)**

SKU: E-11A



**GREASE SEAL FRONT HUB
BEARING (4 CYL) EACH**

SKU: E-12C



**SET (2) RUBBER INSSULATORS
(BETWEEN FRONT SPRINGS AND
CHASSIS)**

SKU: E-13D



**SET (2) FRONT SPRINGS
FACELLIA/ FACEL III**

SKU: E-13E



**SET (2) FRONT SPRINGS FACEL
3/6 FACELLIA (NOS)**

SKU: E-13E (NOS)



**OIL SEAL ROCKERSHAFT
STEERING BOX (GEMMER) 4/ 6
CYL**

SKU: E-14A



**BUMP RUBBER LOWER ARM
FRONT SUSPENSION, ALSO ON
CHASSIS ABOVE REAR AXLE**

SKU: E-15



**BUMP RUBBER UPPER ARM
FRONT SUSPENSION, ALTERN.**

SKU: E-16



**BUMP RUBBER UPPER ARM
FRONT SUSPENSION (ORIGINAL
TYPE)**

SKU: E-16A



**REPAIR KIT CENTRE BEARING
PROPELLOR SHAFT FACELLIA/
FACEL III (BEARING, BUSH,**



**CLUTCH COVER AND PLATE
ASSEMBLY FACEL III**

SKU: E-20D

RUBBERBEARING)

SKU: E-18



**REPAIRKIT CLUTCH MASTER
CYLINDER FACEL III**

SKU: E-20G



**REPAIRKIT CLUTCH SLAVE
CYLINDER FACEL III**

SKU: E-20H



**SPRING ON CLUTCH SLAVE CYL
FACEL III**

SKU: E-20H1



**FLEXIBLE HOSE MASTER-SLAVE
CYLINDER FACEL III**

SKU: E-20I



**CLUTCH MASTER CYLINDER FACEL
III**

SKU: E-20M



**CLUTCH SLAVE CYLINDER FACEL
III**

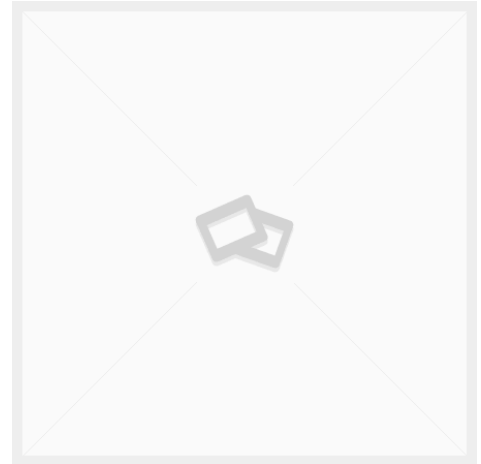
SKU: E-20N



DUST BOOT FOR E-20N (FACEL III)
SKU: E-20NN



DUST BOOT FOR CLUTCH YOKE (FACEL III)
SKU: E-200



OIL FILTER SEAL OVERDRIVE FACEL III
SKU: E-21



REPAIRKIT U-JOINT (PROPELLERSHAFT) 4 CYL EACH
SKU: E-24



GEARBOXMOUNTING FACEL III
SKU: E-35C



U-BOLT LOWER WISHBONE BAR EACH
SKU: E-39



GEMMER STEERING BOX OVERHAUL KIT (4 CYL)
SKU: E-46



SET (2) CORRESPONDING TRACKROD BALL-JOINTS HK/EXC/FACEL II/4/6 CYL
SKU: E-4A



TRACK RODS VARIOUS LENGTHS 20MM
SKU: E-4D



KING PIN OVERHAUL KIT (ALL MODELS) FOR 2 KING PINS, INCLUDING BEARINGS AND BUSHES

SKU: E-5



COTTER PIN + NUT TO SECURE KING PIN

SKU: E-5B



EXCENTRIC FRONT SUSPENSION, NUT, BOLT (UPPER) EACH

SKU: E-7A



CENTRIC FRONT SUSPENSION, NUT, BOLT (LOWER) EACH

SKU: E-7B



SET (8) RUBBER SEALS FOR E-7A/B

SKU: E-7C



GREASE NIPPLE FOR E-7A/B

SKU: E-7F



SET (4) SILENT-BLOCS FRONT SUSPENSION (UPPER)

SKU: E-8A



SET (4) SILENT-BLOCS FRONT SUSPENSION (LOWER)

SKU: E-8B



NUT (UPPER WISHBONE BAR)

SKU: E-8C



NUT (LOWER WISHBONE BAR)

SKU: E-8D



**REPAIRKIT IDLER STEERING ARM
(BEARINGS ONLY) SET (2)**

SKU: E-9A



**REPAIRKIT IDLER STEERING ARM
(AXLE + BEARINGS) (8 CYL)**

SKU: E-9B



CASTLE NUT FOR E-9B

SKU: E-9B1



PITMAN ARM (NOS)

SKU: E-9S3 NOS



**M WINDSCREEN RUBBER ALL
MODELS/ALSO REAR WINDOW
EXC/FACEL II.**

SKU: F-1



**BONNET BUFFER ALL MODELS,
EACH**

SKU: F-11



**RUBBER GROMMET (STEERING
COLUMN-SCUTTLE) EACH**

SKU: F-13



**M REARWINDOW RUBBER FV/HK
(ALSO UNDER SIDE WINDOWS 4
CYL COUPE)**

SKU: F-15



**SET (6) REAR SPRING RUBBERS
(FACELLIA/F III/FACEL 6)**

SKU: F-17B



**RUBBER TO SEAL FUEL HOSE
NEAR FILLERCAP FACELLIA F2/
FIII/F6**

SKU: F-18A



**RUBBER TO SEAL FUEL PIPE FROM
BOOT FLOOR FACELLIA F2/ III/**

SKU: F-18B



**SET (2) ANTI-ROLL (SWAY) BAR
RUBBERS (ALL MODELS)**

SKU: F-20



**SET (8) RUBBERS FOR ANTI-ROLL
(SWAY) BAR LINKS (ALL MODELS)**

SKU: F-20A



**SET (2) SUN-VISOR RUBBERS
(FACELLIA/ FACEL III/ 6)**

SKU: F-22



**SET (16) RUBBER COVERS FOR
HOODFRAME BOLTS
FACELLIA/FACEL III/ 6 CABRIO**

SKU: F-24



**RUBBER GROMMET (STEERING
COLUMN-DASHBOARD) FACEL II/
FACELLIA/ FACEL III/ 6**

SKU: F-25



GEAR LEVER BOOT FACEL III

SKU: F-27



M WINDOW SEAL (ALONG ROOF AND WINDSCREENPILLAR) FACEL II / FACELLIA/ F III/ F6

SKU: F-2B



SET (2) DOOR BUFFERS (WITHOUT THE WORD CHESTON)

SKU: F-30



REAR WINDOW RUBBER FACELLIA/ FACEL III/ FACEL 6 COUPÉ

SKU: F-35



SET (2) RUBBERS TO SEAL QUARTER GLASSES FACELLIA/ FACEL III/ FACEL 6

SKU: F-37A



M DOORSEAL "9" ALL MODELLS

SKU: F-4



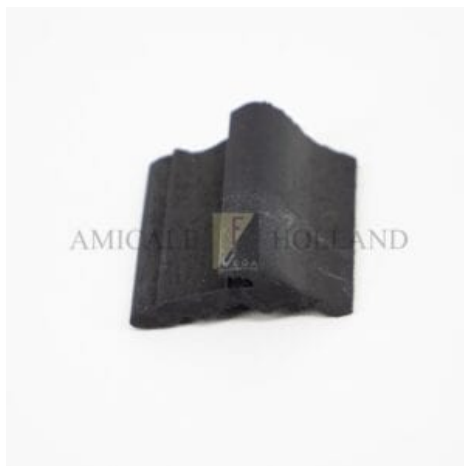
SET (2) CLOSING RUBBERS NUMBERPLATE FACELLIA F2/ F III/ 6

SKU: F-40



M WINDOWSEAL (ALL MODELS) BETWEEN DOOR EDGE + GLASS

SKU: F-5

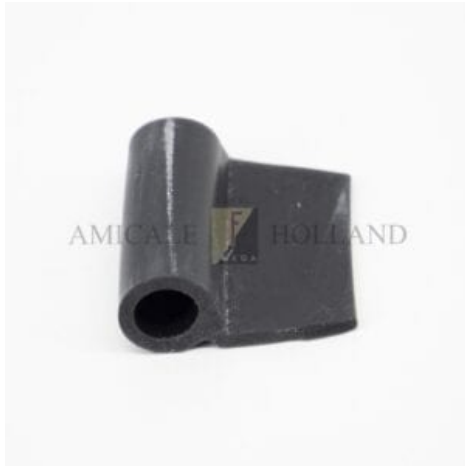


M WINDOWSEAL WITH FELT (FACELLIA/ FACEL II/ III/ 6)



M BOOTLID-SEAL FACEL II/ III/ 6 (ALTERNATIVE)

SKU: F-6A

ALTERNATIVE**SKU: F-5A****M DOORSEAL "Q" P.M****SKU: F-8****M BUMPERSEAL ALL MODELS****SKU: F-9****SET OF BRAKE PADS (4) REAR****SKU: G-2HH****3 WAY CONNECTOR 7/16
(ALTERNATIVE)****SKU: G-2V2****4-WAY UNION BRAKE LINE 3/8 X
24 UNF****SKU: G-2V3****ORIGINAL BRAKE FLUID
RESERVOIR SHORT VERSION****SKU: G-3AA**



**BRAKE SERVO (ALTERNATIVE/
EASY INSTALLATION) SAME
POWER AS ORIGINAL FACEL II- 4
CYLINDER**

SKU: G-3B



REPAIRKIT BRAKE SERVO (G-3B)

SKU: G-3B1



**COILED SPRING (STAINLESS
STEEL) TO PROTECT BRAKE HOSE
(PER M)**

SKU: G-3D2



EQUALIZER HANDBRAKE CABLE

SKU: G-3HE



**ADJUSTMENT DEVICE FOR
HANDBRAKE CABLE**

SKU: G-3HS



**CLEVIS PIN TO CONNECT G-3HE
WITH G-3HS**

SKU: G-3HT



**STOPLAMP SWITCH (ON
MASTERCYLINDER)**

SKU: G-3I



**CAP FOR BRAKE FLUIDRESERVOIR
(ORIGINAL TYPE) WITH LOW**



**BANJO WITH NIPPLE
(ALTERNATIVE) ON**

LEVEL WARNING SENSOR**SKU: G-3J****MASTERCYLINDER (CONNECTION
BRAKE FLUID RESERVOIR)****SKU: G-3MM****BOOT FOR MASTERCYLINDER, ALL
MODELS****SKU: G-3P****PUSH ROD MASTERCYLINDER****SKU: G-3PP****BRAKE LINE CLAMP****SKU: G-3Q****VACUUM HOSE FOR BRAKE
BOOSTER****SKU: G-3S****BASE PLATE HANDBRAKE LEVER
ASSEMBLY ON CHASSIS****SKU: G-3T****BRACKET (SUPPORT) HANDBRAKE
CABLE ON CHASSIS****SKU: G-3U**



SET (4) CALIPERS 2¼ FRONT

SKU: G-4A



**REPAIRKIT CALIPER 2¼
(EXCHANGE) FRONT (PER AXLE)**

SKU: G-4B



SET (4) CALIPERS 1½ (NEW) REAR

SKU: G-4C



**REPAIRKIT REAR CALIPER 1½(PER
AXLE)**

SKU: G-4E



**SET (3) BRAKE HOSES (FRONT
AND REAR) 2X SHORT/ 1X LONG
FACELLIA/ FIII**

SKU: G-4F



**FLEXIBLE BRAKE HOSE BETWEEN
MASTER CYLINDER AND BRAKE
SERVO FACEL III/6; ALSO
SUITABLE FOR FACELLIA IN CASE
THE BRAKE BOOSTER IS FITTED
NEAR THE RADIATOR**

SKU: G-4F2



MASTERCYLINDER (ALSO FOR HYDRAULIC CLUTCH FACELLIA)

SKU: G-4G



SET (4) BRAKEPADS FACELLIA/FACEL III/ FACEL 6 (FRONT OR REAR)

SKU: G-4I



BRAKEFLUIDRESERVOIR (PLASTIC) WITH NUT (ALSO FOR HYDRAULIC CLUTCH FACELLIA)

SKU: G-4J



BRAKE-DISC (FRONT AND REAR) FACELLIA/ FIII/ FACEL 6 EACH

SKU: G-4K



REPAIRKIT FOR ORIGINAL BRAKE SERVO UNIT FACELLIA (RUBBER PARTS ONLY)

SKU: G-4M1



REPAIRKIT FOR ORIGINAL BRAKE SERVO UNIT FACEL III

SKU: G-4M2



SET HANDBRAKE PADS (4) FACELLIA/ FACEL III/ FACEL 6

SKU: G-4O



CABLE SET FOR HANDBRAKE FACELLIA/ FACEL III/ FACEL 6

SKU: G-4P



SET (2) BRAKE CALIPER SUPPORT PLATES FRONT

SKU: G-4Q

Facel Vega

AMICALE HOLLAND

wiring diagram

WIRING DIAGRAM FACEL 3

SKU: H-111006



DRAIN TAP

SKU: I-11



BRACKET FOR HEATER HOSES

SKU: I-13



**TEMPERATURE SENSOR M16X1.5
(ALTERNATIVE) ON ENGINE**

SKU: I-14



**TEMPERATURE SENSOR M18X1.5
(ALTERNATIVE) ON ENGINE**

SKU: I-14A



**AIR HOSE UNDER HOOD Ø 100MM
FV/HK/EXC P.M.**

SKU: I-25



AIR HOSE (ALU) HEATER Ø 50MM

SKU: I-26A



AIR HOSE 70MM

SKU: I-27



**CAP EXPANSION TANK (FACEL
II/FACELLIA/FACEL III/ 6)**

SKU: I-2A



**RADIATOR CAP EXPANSION TANK
(I-8D) FACEL II/ FACELLIA/ FACEL
III/ 6 (NOS)**

SKU: I-2A NOS



**UNIVERSAL WATER HOSE FACEL 3
24MM**

SKU: I-3D1



WATER HOSE FACEL 3

SKU: I-3D2



**HEATER-WATERHOSE Ø 15MM,
PER METRE (8 CYL)**

SKU: I-4



**CONNECTION-PIPES FOR HEATER-
HOSES 15MM**

SKU: I-4A



WATERPUMP FACEL III

SKU: I-5C



THERMOSTAT 82° (FACEL III)

SKU: I-7C



**ELBOW ON WATERPUMP (FACEL
III)**

SKU: I-8C



**EXPANSION TANK (FACEL
II/FACELLIA/FACEL III)**

SKU: I-8D

**WIRING-LOOM FACEL III**

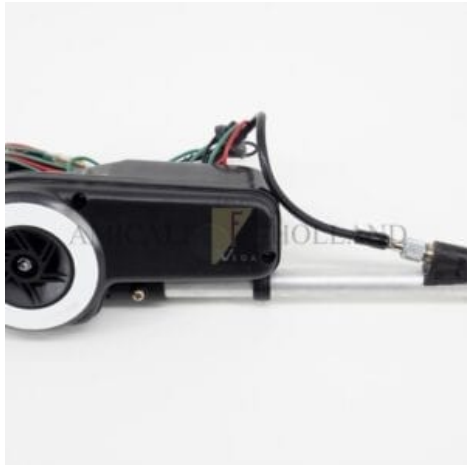
SKU: J-15C

**WARNING LIGHT (COMPLETE UNIT) DASHBOARD, ALL MODELS, RED**

SKU: J-1A

**WARNING LIGHT AIRCO (COMPLETE UNIT) DASHBOARD, GREEN HK/ EXC/ FII**

SKU: J-1B

**HIRSCHMANN ELECTRIC AERIAL**

SKU: J-24

**ANTENNA DUMMY (FOR SYMMETRY)**

SKU: J-24A

**AERIAL EXTENSION CABLE 4M**

SKU: J-24AA

**AERIAL EXTENSION CABLE 2M**

SKU: J-24AB

**ADAPTER (ORIGINAL AERIAL CABLE TO NEW AERIAL)**

SKU: J-24B

**IGNITION LOCK WITH KEYS FACELLIA/ FACEL III/ FACEL 6 (ALTERNATIF)**

SKU: J-26B



**SWITCH 3-WAY (LIGHTS,
BLOWER) FACEL II/ FACELLIA/
FACEL III/6**

SKU: J-2A



**SWITCH 3-WAY (WIPER)
FACELLIA/ FACEL III/6**

SKU: J-2B



**CIGAR LIGHTER (ALT) COMPLETE
WITH BLACK PLASTIC KNOB*
*PLASTIC KNOB CAN EASILY BE
REPLACED BY CHROME PLATED
"FACEL" KNOB (SEE L-24)**

SKU: J-3



**SET (2) HORNS (FV/ HK/ EXC/
FACEL II) ALTERNATIVE**

SKU: J-30



**CIGAR LIGHTER POP OUT UNIT
ONLY, WITH BLACK PLASTIC
KNOB**

SKU: J-3A



**BATTERY MASTER SWITCH
(REMOVABLE KEY)**

SKU: J-4



**BATTERY MASTER SWITCH
(SCREW ON/ OFF KNOB) WITH BY-
PASS FUSE**

SKU: J-4A



ALTERNATIVE WIPER MOTOR

SKU: J-54



**WIPER MOTOR RECONDITIONED
AUTO-LITE ORIGINAL**

SKU: J-54-0



**ALTERNATIVE RELAIS (STATE
WHICH YOU NEED)**

SKU: J-55



MARCHALL RELAY (NOS)

SKU: J-55 NOS



FLASHER FOR J-5A

SKU: J-5B



**CONVERSION KIT ELECTRONIC
IGNITION FACEL III**

SKU: J-6AD



CONDENSER FACEL III

SKU: J-6E1



**COIL 12 V (8 CYL.) TO BE USED
WITH J-6G**

SKU: J-6F



BALLAST RESISTOR 8 CYL (TO BE USED WITH J-6F)

SKU: J-6G



CONTROL BOX (REGULATOR) FACEL III

SKU: J-6H2



CONTACT POINTS FACEL III

SKU: J-6L1



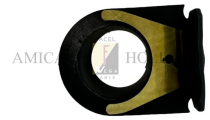
DISTRIBUTOR CAP FACEL III

SKU: J-6M1



STEERING COLUMN SPRING WASHER

SKU: J-6Q



RETURN BLINKER

SKU: J-6R



SWITCH (ON DOORPOST) INTERIOR LIGHT (FV/ HK/ EXC)

SKU: J-7



INTERIOR LIGHT SWITCH ON DOOR POST

SKU: J-7A



RHEOSTAT (ALTERNATIVE)

SKU: J-7AA



RHEOSTAT (NOS)
SKU: J-7AA (NOS)



**INTERIOR LIGHT SWITCH ON
 DOOR POST NOS**
SKU: J-7NOS



**DIRECTION INDICATOR SWITCH
 WITH WARNING LAMP FACELLIA
 F2/ FACEL III/ FACEL 6 (COMPL
 UNIT)**
SKU: J-8C



BULB FOR J-8C INDICATOR
SKU: J-8C1



**GREEN LENS (WARNING LIGHT)
 ON J-8C**
SKU: J-8D



**ALTERNATIVE FOOT OPERATED
 DIP SWITCH (ALL MODELS)**
SKU: J-8E



SPARK PLUG CABLE SET FACEL III
SKU: J-9AA



**CIRCUIT BREAKER 10 AMP (HK/
 EXC/ FACEL II/ 4/6 CYL)**
SKU: J-9C



**CIRCUIT BREAKER 20 AMP (HK/
 EXC/ FACEL II/ 4/6 CYL)**
SKU: J-9D



**BUMPER ROSETTE (OVERRIDE)
FRONT OR REAR, IN STAINLESS,
POLISHED BUT TO BE ADAPTED
FOR LEFT OR RIGHT, (ALL
MODELS)**

SKU: K-120



ENTRY STRIP (USED)

SKU: K-12C



**MEGALUX HEADLAMP RIM
(FACELLIA F2/ FACEL II / FACEL III/
FACEL 6)**

SKU: K-18



**CLIPS FOR MEGALUX HEADLAMP
RIM (K-18)**

SKU: K-18K



FRONT SCREEN LEFT

SKU: K-2C



FRONT SCREEN RIGHT

SKU: K-2CA

**WELD GAGE NUT M6****SKU: K-2G****WELD GAGE NUT M8****SKU: K-2H****SET (2) FINISHING STRIPS (ALU)
ENGINE BAY APERTURE (ALL
MODELS)****SKU: K-3B****GLASS FRAME UNDER SLIDING
DOOR WINDOW****SKU: K-58A****REAR LICENSE PLATE HOLDER
FACELLIA/ FACEL III/6****SKU: K-58C****GASKET SUCTION PIPE FV / HK****SKU: K-70AB****FUEL TANK IN STAINLESS STEEL
FACELLIA/ FACEL III****SKU: K-70B****ALTERNATIVE TANK FLOAT IN
BRASS****SKU: K-70V****TANK FLOAT ALTERNATIVE 2
CONNECTIONS****SKU: K-70V1**



**TANK CAP FACELLIA/ FACEL III
(NOS)**

SKU: K-71 NOS



**COVER PLATE JACK-HOLE IN
STAINLESS STEEL, FACELLIA
FACEL III/ F6**

SKU: K-96



**SET (4) HUB CAPS FACELLIA/
FACEL III- USED**

SKU: K-9F



**BLADE, STAINLESS STEEL 5MM,
BAYONET FITTING**

SKU: L-1



**SCRIPT "FACEL III", CHROME
PLATED**

SKU: L-10B2



**DASHBOARD-INSTRUMENTS:
SMALL**

SKU: L-12



**AMPÈREMETER, NEW 30-0-30
ALTERNATIVE**

SKU: L-12B



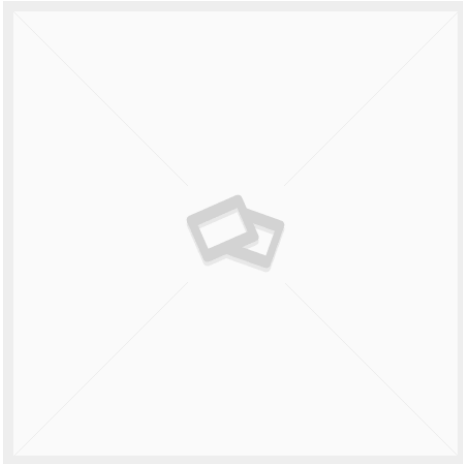
AMPÈREMETER, NEW 50-0-50

SKU: L-12BB



**WATER TEMPGAUGE WITH
SENSOR, NEW ALT.**

SKU: L-12C



**OIL TEMP GAUGE WITH SENSOR,
NEW**

SKU: L-12D



OIL PRESSURE GAUGE, NEW ALT.

SKU: L-12F



**O-RING SMALL DASHBOARD-
INSTRUMENTS**

SKU: L-12G



**DASHBOARD-INSTRUMENTS:
LARGE**

SKU: L-13



**O-RING LARGE DASHBOARD-
INSTRUMENTS**

SKU: L-13A1



**LARGE INSTRUMENT RINGS,
CHROME**

SKU: L-13B



**KNOB (HORN) DIRECTION
INDICATOR) ALL MODELS**

SKU: L-16A



**HILT FOR HAND-BRAKE
(FACELLIA/ FACEL III)**

SKU: L-17A



PUSH KNOB HAND BRAKE LEVER

SKU: L-17C



**ROUND FACEL VEGA ENAMEL
BADGE FACEL II/ III**

SKU: L-19



**ROUND FACEL VEGA ENAMEL
BADGE FACEL II/ III, MORE
CURVED TYPE**

SKU: L-19-1



**STAINLESS BEZEL UNDER L-19
(FACEL III BOOT)**

SKU: L-19A



**SET (4) BADGES FACELLIA
WHEELCOVER**

SKU: L-19B



**WIPER BLADE, STAINLESS STEEL
7MM, BAYONET FITTING**

SKU: L-1A



**WIPER ARM ADJUSTABLE RIGHT
HAND CRANK, 7MM BAYONET
FITTING, STAINLESS**

SKU: L-1A1



**WIPER ARM ADJUSTABLE LEFT
HAND CRANK, 7MM BAYONET
FITTING, STAINLESS**

SKU: L-1A2



ADAPTER SPLINE TO COLLET

SKU: L-2



**RECTANGULAR FACEL VEGA
ENAMEL BADGE 33X52MM**

SKU: L-20A



**RECTANGULAR FACEL VEGA
ENAMEL BADGE 26X41MM**

SKU: L-20B



**BEZEL UNDER L-20B (CONSOLE 8
CYL)**

SKU: L-20BB



**ADAPTER FOR STEERING WHEEL
(FLANGE WITH SPLINES) SMALL**

SKU: L-21B



**ADAPTER FOR STEERING WHEEL
(FLANGE WITH SPLINES) LARGE**

SKU: L-21B1



**STEERINGWHEEL 38 CM WITH
SPLINES ALTERNATIVE**

SKU: L-22A



**STEERING WHEEL 41 CM WITH
SPLINES ALTERNATIVE**

SKU: L-22B



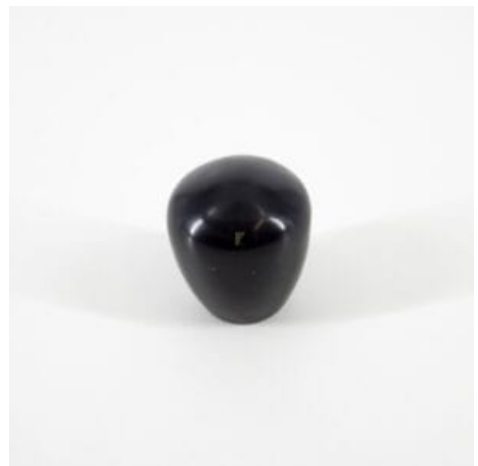
**STEERING WHEEL 41 CM WITH
KEY ALTERNATIVE**

SKU: L-22B1



**HUB (2 PARTS) NARDI STEERING
WHEEL**

SKU: L-22C



**KNOB GEARBOX HANDLE PAM
(ALL MODELS)**

SKU: L-23A



KNOB GEARBOX HANDLE FACEL III
SKU: L-23AA



**KNOB (LIGHT SWITCH), CHROME
PLATED**
SKU: L-24



**HOOD LATCH FACELLIA/ FACEL III/
FACEL 6 CONVERTIBLE**
SKU: L-25



**CENTRE BRACKET (2 PIECES)
CHROME, FOR HOOD 4/6 CYL
CONVERTIBLE**
SKU: L-25A



**MANUFACTURER'S PLATE
(CHASSIS NUMBER FACEL III)**
SKU: L-28A



**STEERING WHEEL BOSS
FACELLIA/FACEL III WITHOUT
BADGE**
SKU: L-29C



**SET (2) WASHER JETS (CHROME),
ALTERNATIVE**
SKU: L-30



**WINDSCREEN WASHER
RESERVOIR WITH ELECTRIC PUMP
(ALTERN)**
SKU: L-30A



**OUTSIDE REARVIEW MIRROR LH
SIDE, STAINLESS STEEL**
SKU: L-31



**OUTSIDE REARVIEW MIRROR RH
SIDE, STAINLESS STEEL**

SKU: L-31A



**SUN VISOR HINGE (8 CYL) CASTED
REPLICA, CHROME PLATED**

SKU: L-33A



**SPEEDOMETER PINION FACEL III
BLACK**

SKU: L-35G



**CABLE SPEEDOMETER FACEL III
WITH OVERDRIVE**

SKU: L-35GG



**SET (2) RUBBER SEALS ADAPTER
FOR SPEEDOMETER CABLE FACEL
III WITH OVERDRIVE**

SKU: L-35GGG



**ADAPTER SPEEDOMETER CABLE
FACEL III**

SKU: L-35M



**STAINLESS HILT ON LICENSE
PLATE HOLDER (FACELLIA/ FACEL
II/ III/ 6)**

SKU: L-39E



**WIPER ARM ADJUSTABLE RIGHT
HAND CRANK, 5MM BAYONET
FITTING, STAINLESS**

SKU: L-3C



**WIPER ARM ADJUSTABLE LEFT
HAND CRANK, 5MM BAYONET
FITTING, STAINLESS**

SKU: L-3D



WIPER SHAFT COMPLETE

SKU: L-4



HANDLE "CAPOT" ON L-40E

SKU: L-40F



DOOR LOCK INSIDE LEFT (NOS)

SKU: L-40K NOS



DOOR LOCK INSIDE RIGHT (NOS)

SKU: L-40K1 NOS



DOOR CATCHER LEFT

SKU: L-40L



DOOR CATCHER RIGHT

SKU: L-40L1



**HORN RING (WITHOUT STALKS)
FACEL II/ III/ 6, FACELLIA**

SKU: L-44



**STALK (TO FIT ON L-44) WITH NUT
FACEL II/FACELLIA/ FACEL III/ F 6
EACH**

SKU: L-44A



**HORN RING (WITHOUT STALKS)
FACEL II/ III/ 6, FACELLIA (KOPIE)**

SKU: L-44B



**HORN/INDICATOR RING
FII/FACELLIA/FIII/6 COMPLETE**

SKU: L-44C



**MIRROR GLASS FOR INTERIOR
REAR VIEW MIRROR**

SKU: L-45-1



**ORIGINAL INTERIOR REAR VIEW
MIRROR**

SKU: L-45D



**INTERIOR MIRROR HOLDER
CHROME FACELLIA / FII / FIII / F6**

SKU: L-48-1



**NUT FOR INSIDE REAR VIEW
MIRROR BRACKET (L-48-1)
FACELLIA/ F II/ III/ 6**

SKU: L-48C



**MOUNTING NUT MIRROR
DASHBOARD**

SKU: L-48C-1



**SPECIAL NUT TO FIT INSIDE REAR
VIEW MIRROR ON L-49**

SKU: L-48E



**CONNECTION BETWEEN BRACKET
L-48 - L-48-1 AND MIRROR L-45D**

SKU: L-49



**QUARTER WINDOW HANDLE LH
CHROME**

SKU: L-49A



**QUARTER WINDOW HANDLE RH
CHROME**

SKU: L-49B



**SPANNER TO REMOVE/ REFIT
KNOCK-OFFS WITHOUT WINGS**

SKU: L-50D



**KNOB ON ADJUSTMENT
MECHANISME (BACK-SEAT),
ROUND FII/ III/ 6**

SKU: L-70



**KNOB ON ADJUSTMENT
MECHANISME (BACK-
SEAT), TRAPEZIUM FII/ III/ 6**

SKU: L-71



**SET (BOLT+ NUT) BACK-SEAT
ADJUSTMENT**

SKU: L-71A



HILT DASHBORDLID

SKU: L-72



PLATE "DO NOT JACK HERE"

SKU: L-73



**SET (2) WOODEN BLOCKS TO
STOP THE CAR ON A HILL**

SKU: L-75